

Seismic Mounts & Restraints

Features/Benefits

- Static Load Ranges from 60 to 13,200 lbs.
- Static deflections to 2 inches
- All mounts incorporate neoprene cushions.

Applications

- HVAC Equipment
- Fans, Pumps
- Chillers, Cooling Towers
- Motor Generators
- Duct and Equipment

Type AEQM Spring-Flex Mountings

Designed for seismic and restrained applications. These mountings are capable of withstanding accelerated forces in all directions and providing static deflections up to 2" and loads to 2500 lbs. They also incorporate an all-directional neoprene grommet and an adjustable upward rebound plate.

Type SR Seismic Restraints

Fabricated of welded steel components incorporating thick neoprene elastomer pads molded to Bridge Bearing quality specifications, the design of these restraints allows for the removal and replacement of the neoprene elements. For loads from 250 to 12,000 lbs.

Type AWMR Restrained Spring-Flex Mountings

The design incorporates a rugged welded steel housing with vertical and horizontal limit stops able to withstand accelerated forces in all directions. Loads to 10,000 pounds and static deflections to 2". They are particularly recommended for equipment with differing installed and operating loads such as cooling towers and chillers or equipment subjected to severe wind loads.

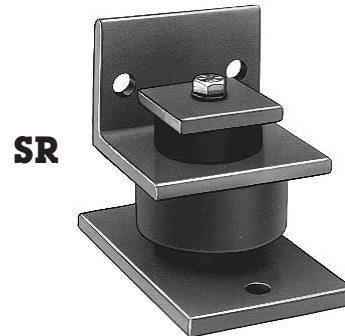
Type AWRS Spring-Flex Mountings

The design utilizes our open spring isolators within a welded steel housing. The housing is designed to limit vertical movement when used under equipment with large variations in mass such as chillers, or to prevent excessive motion of outdoor equipment, such as cooling towers, due to high winds. The AWRS design also acts as a secure blocking during equipment installation and offers full leveling capability. These mountings are available with up to 5 inches of static deflection and can be designed to support virtually any load.

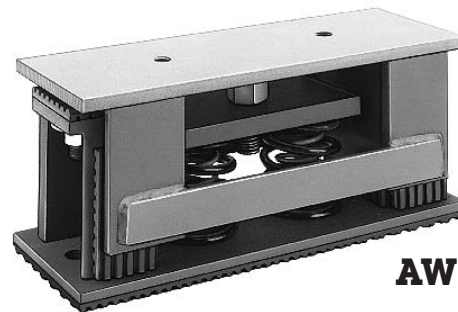
For more comprehensive information on Korfund's Seismic Mounts and Restraints, consult factory.



AEQM



SR



AWMR



AWRS